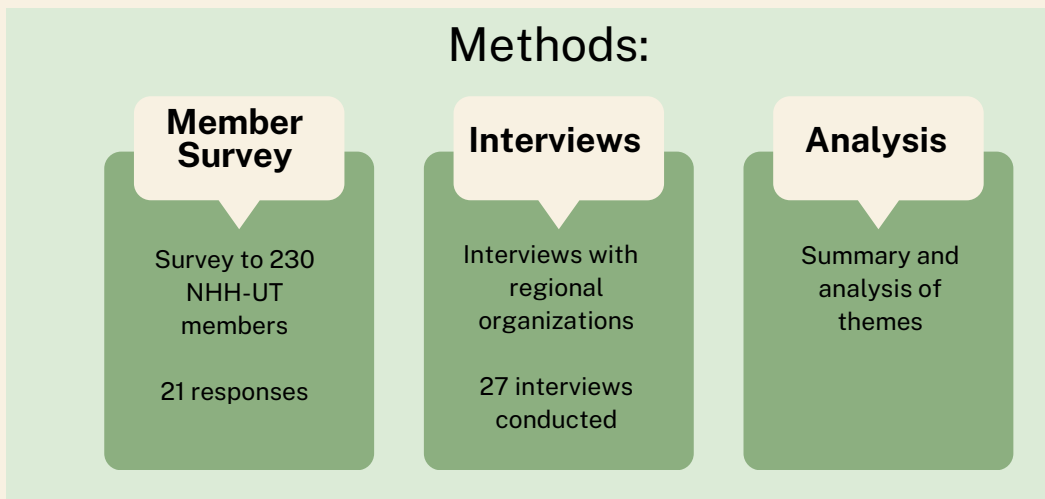


Co Leaders: Nalini Nadkarni, Dart Schmalz, Tim Brown

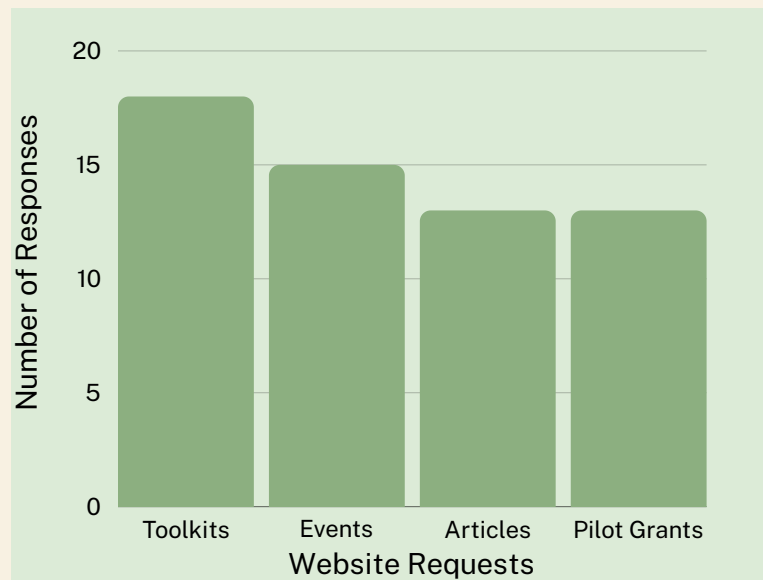
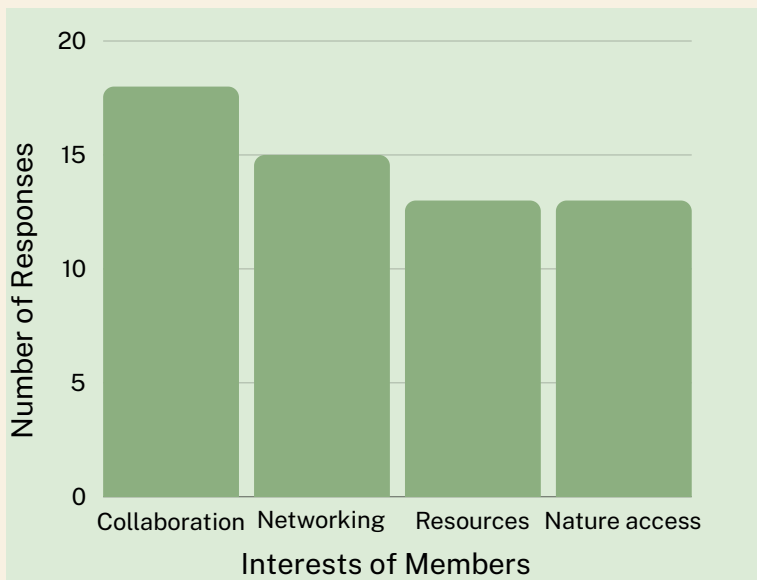
Landscape Assessment

Conducted and prepared by Myra Gerst, Program Manager

Background: Nature and Human Health UT's Landscape Assessment is a collaborative project with a broad spectrum of community organizations dedicated to advancing links between nature and human health. Through interviews, surveys, and document analysis, this assessment aims to understand and communicate the ongoing work, challenges, and opportunities in this field in Utah. These insights will shape NHH UT's strategic planning and development of action plans.



Results: Member Survey



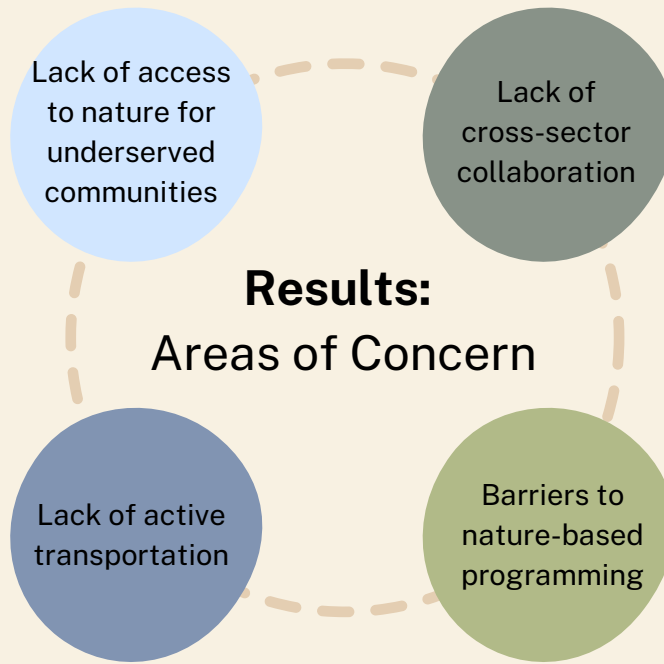
Interviews: Organizations Represented

Bike Utah
Utah Department of Health and Human Services
Trails Utah
Utah Physicians for a Healthy Environment
Huntsman Cancer Institute
HEAL Utah
Intermountain Health
Kem C. Gardner Policy Institute

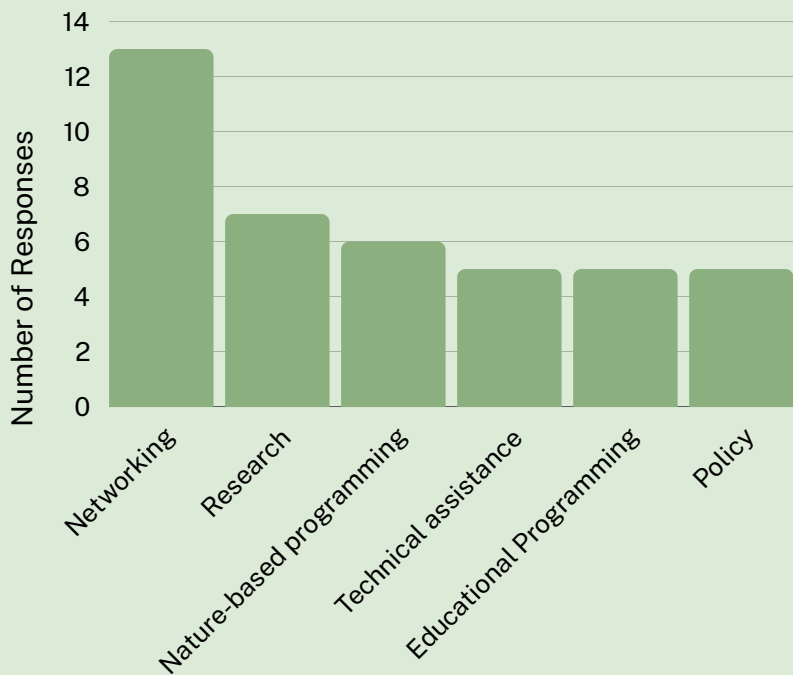
Get Healthy Utah
Utah Division of Natural Resources
Millcreek City Promise Program
University of Utah Health
The Nature Conservancy
Tree Utah
Summit County Health Department
Park Rx Utah

Ogden Nature Center
Wasatch Mountain Institute
Wasatch Adaptive Sports
Wasatch Community Gardens
University Neighborhood Partners
Salt Lake City Public Lands
Wildlands Network
Utah Clean Energy

Following interviews, the Program Manager reviewed and summarized key points, ensuring accuracy by sending the summaries to interviewees and soliciting feedback to ensure accuracy of notes. Subsequently, all summaries were revisited to identify recurring themes and patterns, revealing **four areas of concern and focus in the current landscape:**



Interview Results: Suggested Directions for NHH-UT



Interview Results: Current Challenges for Organizations/NH Field

- Equity/access
- Capacity
- Transportation
- Education
- Youth programming
- Policy

Moving Forward:

Incorporate results into strategic plan	Collaborate with more EDI-focused organizations	Expand networks state-wide
---	---	----------------------------

Conclusions:

This effort affirmed the need for a collaborative and interdisciplinary arena to increase equitable access to nature, develop innovative ways to promote preventative health measures through nature, and increase pro-environmental behaviors by connecting more people to nature. NHH UT will share the landscape assessment with key partners, NHH-UT members, and nature-health researchers involved at a national level

Acknowledgements:

We recognize an anonymous donor and REI Cooperative Action Fund. for funding. Our fiscal sponsor is the Tracy Aviary. Administrative support is from the University of Utah's Department of Parks, Recreation, and Tourism.

